

Medical Equipment for Loan

Gig Harbor Fire & Medic One has:

Wheel Chairs

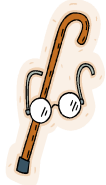
Walkers

Crutches

Canes

For loan to the public!

These items can be borrowed from:
Headquarters 10222 Bujacich Rd (851-3111)
Station 51 6711 Kimball Dr. (851-5111)



Gig Harbor Fire & Medic One

Created 12/12/07